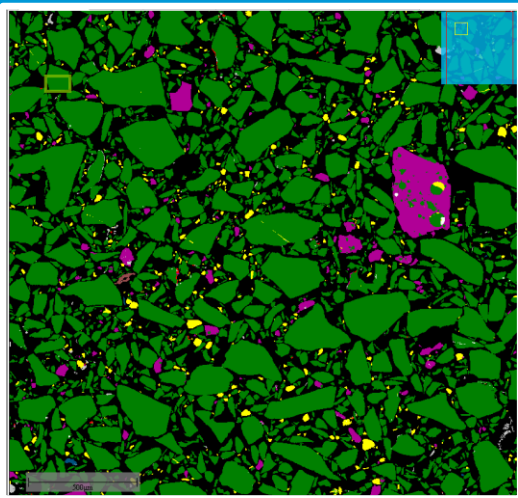
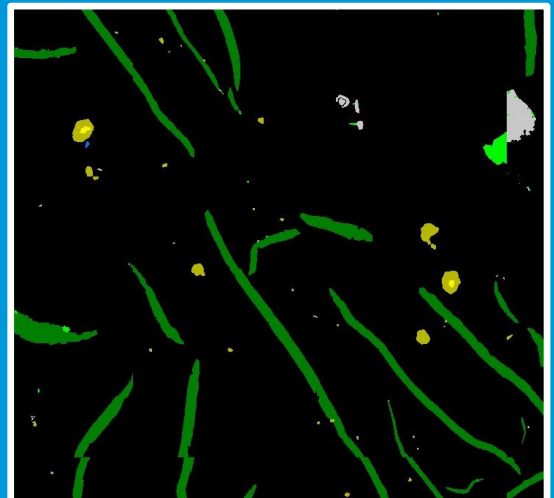


AMICS is a software part of an analysis branch called *Automated Mineralogy*. Its a technology or method of performing high speed, autonomous image and spectral analysis of rocks and minerals and provides information on mineralogy and spatial distribution of the mineral phases. Due to of its innovative segmentation technique, the advantages compared to traditional mapping are its speed, automation and high quality phase discrimination

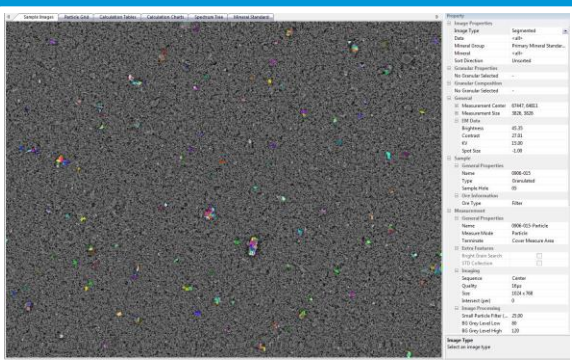
EXAMPLES



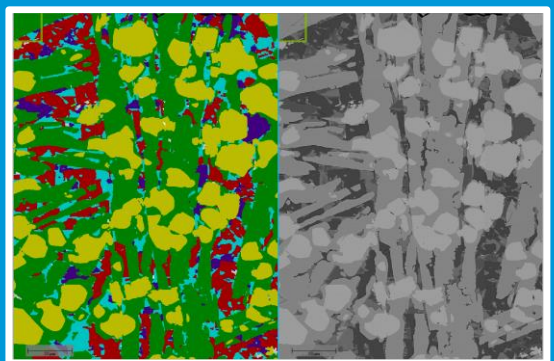
Identifying impurities in a powder



Quantify micro inclusions in grey iron



Examine mineral particles trapped on a filter paper



Mapping of a Ferro Silicon Magnesium (FSM) alloy

Identification of phases and minerals, typically oxides, based on BSE-signal segmentation are often challenging when several minerals have very similar BSE values. AMICS solves this problem by its unique segmentation method



CONTACT

Anders H. Amundsen
 Manager, Materials Characterisation Lab,
 Elkem Technology
etlab@elkem.no
 Mobile : +47 90958981

